



Solutions for a Cleaner Environment

Page 1 of 2



#8250

Freedom

HEAVY DUTY FREE-RINSING CLEANER

DESCRIPTION:

A chemically balanced detergent containing nonionic surfactant, emulsifier, and sequestering agent for the finest all-around cleaning. FREEDOM can be used for complete maintenance of all washable surfaces with a mild pH of 9.1 in dilution.

WHAT DOES IT DO?

FREEDOM is an all-purpose cleaner that is great for cleaning heavily soiled floors. FREEDOM can be used on all linoleum, rubber, asphalt, synthetic, vinyl, granite, terrazzo, hard tile, concrete, sealed wood and any washable surface. Do not use on marble.

WHY IS IT USED?

FREEDOM is non-dulling and low foam with no rinsing required – wipes away without leaving a residue. Concentrated for economy. **Neutralizes stripper residue and ice melt residue tracked onto floors in winter months.** Removes soap scum and hard water deposits. FREEDOM meets ASTM D2047 method for slip resistance.

HOW IS IT USED?

- **General Cleaning:** 1 part concentrate to 64 parts water (2 oz. per gallon).
- **Extreme Soil:** 1 part concentrate to 20 parts water (6 oz. per gallon),
- **Scrubbing Machines:** 1 part concentrate to 64 parts water (2 oz. per gallon).
- **Damp Mopping:** 1 part concentrate to 128 parts water (1 oz. per gallon).

ALSO EXCELLENT FOR:

Automobiles: Hand cleaning: 1 oz. per gallon. Pressure wash: ¼ oz. per gallon.

Aluminum, Stainless Steel: Dilute 1 part concentrate to 40 parts warm water (3 oz. per gallon). Apply with clean cloth, agitate lightly. Wipe with damp cloth then dry with clean, dry cloth.

Furniture, Woodwork: Dilute 1 part concentrate to 60 parts water. Wipe with damp cloth then dry with clean dry cloth.

Glass: Dilute 1 oz. per gallon of water. Spray on, wipe off.



Gym Floors: Dilute 1 part concentrate to 15 parts hot water, let stand and scrub as necessary. For scuffs or stains on baseboards, use steel wool with solution and rub lightly.

Restrooms: Dilute 4 oz. per gallon of water. Spray on. Let stand and agitate with cloth, brush or sponge. Rinse with water and let dry.

Leather, Plastic Upholstery: Dilute 1 part concentrate to 60 parts water. Apply with spray, cloth or sponge, wipe dry.

Trucks, Aircraft: Dilute 1 part concentrate to 30 parts water, apply with brush and hose off.

For Food Plant Use: Food contact surfaces are to be rinsed with potable water before reuse.

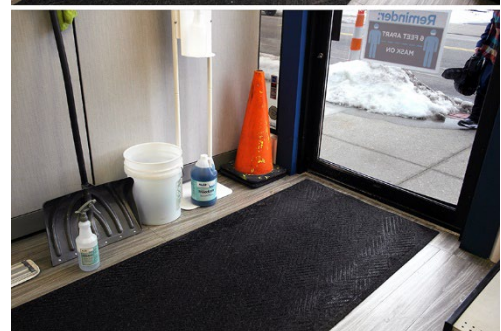
Note: For stripping and maintaining asbestos containing tile, follow OSHA or EPA guidelines.

PACKAGING:

This product is available in Closed Loop, single gallons, 4 -1 gallon case, or 55 gallon drums.



//Freedom Before & After Ice Melt Residue (1 Application



//Freedom Can Also Be Used as a Carpet Pre-Spray to Neutralize Ice Melt Stains

June 15, 2023